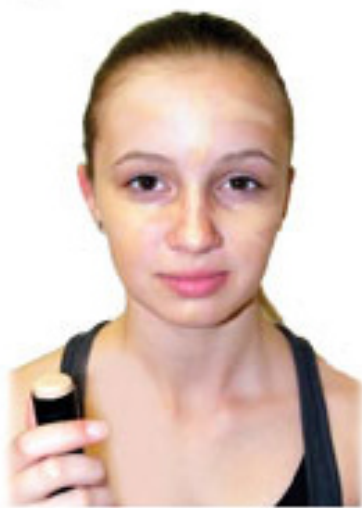




1. Start with a clean face. Pull your hair back to begin.



2. I prefer a non greasy stick foundation. It doesn't streak when you perspire and a light application has good coverage.



3. Blend foundation from center of face to hairline. Apply creme under eye corrector, also apply on eyelids. Apply face powder to set.



4. Apply cheek color over half of apple of cheek and follow up cheekbone to hair line. Remember stage lights will wash you out.



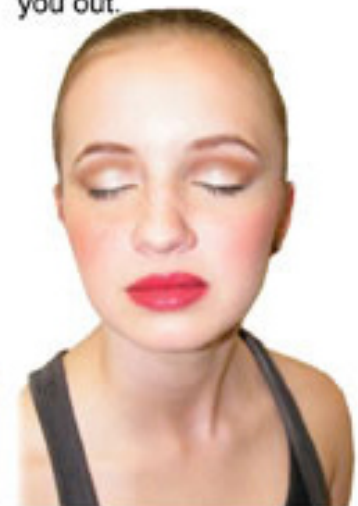
5. Use powder or pencil to accent and define a classic brow shape. Have your brows groomed and shaped prior to show time.



6. Traditionally red is used. For a clean contemporary design I have used a beautiful soft coral red.



7. Pearl white eye color is applied on eye lids, as hilite under brows and under lower lashes to make eyeliner "pop" and be more effective.



8. Matte brown eye shadow is applied to brow bone and to outer corner of eye lid.



9. Apply black eyeliner to upper lid extending up and out. Let dry.



10. Apply eye liner to lower eye lid, keeping outer eye lines open. Apply mascara to lashes.



11. The finished "Clean Beauty" makeup application!



You can also add False Eyelashes to this makeup.